

From Crisis To Resilience Webinar Series

Emerging Challenges, Addressing Root Causes

Webinar Report
2022





The “From Crisis to Resilience” series by GOAL was launched in 2021 in partnership with The RAND Corporation, University College London, and The Harvard Humanitarian Initiative. This annual event is funded by Irish Aid and aims to explore emerging lessons and best practices for building resilience in the most challenging of environments: fragile and conflict-affected contexts.

GOAL’s From Crisis to Resilience webinar series will return in 2023.

Sign up to our mailing list and be the first to hear more:

<https://www.goalglobal.org/innovation/>

Watch the recorded webinars at:

<https://www.goalglobal.org/resilience/>



Content

Collaborating Partners.....	4
Numbers at Glance.....	5
Programmes Represented.....	6
Webinar 1.....	8
Webinar 2.....	11
Comments.....	17
Contact.....	18



Collaborating Partners



HARVARD
HUMANITARIAN
INITIATIVE



Irish Aid
Rialtas na hÉireann
Government of Ireland



NUMBERS AT GLANCE



WEBINAR 1

W1 Registered
561

W1 Attended
190

WEBINAR 2

W2 Registered
582

W2 Attended
201

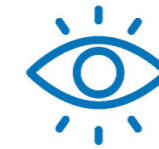
34% AVERAGE REGISTRANT TO ATTENDEE CONVERSION

W1 33.86% W2 34.53%



56 MINUTES
AVERAGE STAY OF ATTENDEES
IN SESSION

59 MINUTES
Webinar 1
56 MINUTES
Webinar 2



88 MINUTES
AVERAGE WEBINAR SERIES
DURATION

85 MINUTES
Webinar 1
90 MINUTES
Webinar 2



The total Innovation Lab
contact list is now



1,610



69 COUNTRIES REPRESENTED



AVERAGE REACH IN EMAIL AND LANDING PAGE

EMAIL

4,357 Emails sent

43% Average open rate

30% Click through rate

LANDING PAGE

755 Page Views

520 Entrances

AVERAGE REACH SOCIAL MEDIA

LinkedIn

4,181 Total Impressions

217 Average Engagements

5.43% Average Engagements rate

Facebook and Instagram Ads

WEBINAR 1

4,618
Facebook & Instagram
Ads Link clicks

184,128
Facebook & Instagram
Ads Reach

WEBINAR 2

3,513
Facebook & Instagram
Ads Link clicks

164,960
Facebook & Instagram
Ads Reach

Twitter

13,564 Total Impressions

339 Average Engagements

3.73% Average Engagements rate



Programs Represented

- Academia
- African Field Epidemiology Network
- African Union Commission
- Allina Health
- CARE
- CDA Collaborative Learning
- Center Maine Community College
- Civil Society Action Coalition on Disaster Mitigation
- Concern Worldwide
- Center for Research and Training in Disaster Medicine, Humanitarian Aid, and Global Health (CRIMEDIM)
- Catholic Relief Services (CRS)
- Danish Refugee Council
- Disability Rights Florida
- Dr. D. Y. Patil Medical College, Hospital & Research Centre
- Education For All Coalition
- Emory University
- Environmental Education and Youth Empowerment (EEYE)
- EW-T Ltd
- Finnish Red Cross (FRC)
- First Aid of the Soul
- Florida International University
- GAVI (The Vaccine Alliance)
- GDS Services International Limited
- George Washington University
- Ghana Army
- GOAL
- Goethe-Institut
- Good Neighbors International
- Govt PG College Rajouri
- GSMA Association
- GU Energy Labs: Supplements & Nutrition for Athletes
- Habitat for Humanity
- Haiti Adolescent Girls Network
- Hamerkop Climate Impacts Ltd.
- Hamilton College
- Harvard
- Humedica E.V
- University of Ottawa
- Internation Medical Corps (IMC)
- Indian Institute of Management Kozhikode
- Iniskoy for Peace and Development Organization (IPDO)
- Aeronautical Institute of Technology
- Swiss Federal Institute of Technology in Zürich (ETH)
- TAAKULO Somali Community
- Team Rubicon
- International Committee of the Red Cross (ICRC)
- International Organization for Migration (IOM)
- Jayasinghe Associates
- Johns Hopkins University
- King's College London
- Laurea University of Applied Sciences
- London School of Economics
- Malteser International
- Margaret A. Cargill Philanthropies (MACP)
- Montgomery County Public Schools (MCPS)
- Ministry of Foreign Affairs
- Ministry of Youth and Sports
- Massachusetts Institute of Technology (MIT)
- Doctors Without Borders (MSF)
- Indonesia's National Disaster Management Organization (NDMO)
- National Foundation for Development and Humanitarian Response (NFDHR)
- North Shore Emergency Management (NSEM)
- OAM Consult
- Oxfam America
- Oxford Brookes University
- Qatar Charity
- QDSBG Construction
- RAND Corporation
- Bridging the Gaps RET Germany
- Salt Meadow Consulting (SMC)
- San Francisco Film School
- Save the Children International
- Sisters of St. Joseph
- Stanford
- STEMA
- Syria Immunization Group
- Harvard School T.H. Chan
- The White Helmets
- Trócaire
- Tufts University
- Turkana County Government
- UCI Irvine
- USAID Global Health MCH & Nutrition
- University of Southern California (USC)
- World Food Programme (WFP)
- London's Global University (UCL)
- UK Health Security Agency

- UMass Boston
- Think Tank
- The University of North Carolina at Chapel Hill
- Women's University of the Sacred Heart
- University of Peloponnese
- University of Waterloo
- University of Southern California (USC)
- United Nations Agencies
- Vincent Pol University
- World Bank
- World Health Organization (WHO)
- World Resources Institute
- World Vision Ireland
- World Resources Institute (WRI)
- Royal Tropical Institute
- Action Against Hunger
- Al Zorah LLC
- American Association of Freedmen
- Latin American Association of Human Rights (ALDHU)
- Universitatea Babeş-Bolyai
- Baha'i International Community
- Inter-American Development Bank (IDB)
- Big Family 360 Foundation
- Cadena A.C.
- Cambodia Econometric Association
- The Healthcare Improvement Studies Institute (THIS)
- Canadian Red Cross
- Carter Centre
- Catholic Relief Services
- Central Maine Community College
- University of Stirling
- University of the Philippines Visayas
- University of Virginia
- Carnegie Mellon University (CMU)
- University of Columbia
- Convoy of Hope
- Corus International
- Creative Consultant International Ltd.
- Emergency Children's Help Organization (ECHO)
- Elite Crisis Management
- Equal Ground
- Engineering and Design Organisation (FACT)
- United Nations Development Programme
- University of Chicago
- Federal Reserve Board
- Federal Medical Centre, Abeokuta
- Fundación Azimuth
- Health Care Service Sector (ILO)
- Human Access for Partnership and Development
- Health Systems Global
- HELP Logistics
- Henry Ford Health (HFHS)
- Handicap International
- University College Cork
- University of Alberta
- Innovation Health Experts Group
- International Rescue Committee
- Interpeace
- Intrahealth
- International Research and Exchanges Board (IREX)
- University Institute of Lisbon
- İstanbul Üniversitesi
- Jogan Health
- Karolinska Institute
- Kings College London/UW Dept. of Surgery
- La Jeune
- Laurea University of Applied Sciences
- Medair
- Medglobal
- Doctors of the World (MDM)
- Mercy Corps
- World Education
- Misesan Cara
- National Commission for Refugees, Migrants, and Internally Displaced Persons
Newman Institute
- UN Human Rights Office
- O.P. Jindal Global University
- Oregon State University
- Palestine Children's Relief Fund
- Pardee RAND Graduate School
- Pathfinder International
- Peace Corps of Nigeria
- Plan International Haiti
- Project ECHO (Extension for Community Healthcare Outcomes)
- Prosperity Kenya
- Rwazi
- Tung Wah College
- Siemens Healthineers
- Sena - Javeriana Colombia
- Universidad Autónoma de Querétaro
- University of Heidelberg
- University of Duesseldorf
- University of Education, Winneba
- University of Montreal

AGENDA & KEY LEARNING

“

Health resilience is the ability of people household communities health systems to prepare for, mitigate, adapt to, and recover from acute recurring and ongoing shocks and stresses in a manner that reduces disruption to access and use of quality healthcare and facilitates equitable health and wellness outcomes.

”

Isabelle Bremaud

*Regional Resilience Advisor for Momentum
Integrated Health Resilience at GOAL*



Webinar 1

Localisation for Resilient Health Systems

 November 9, 2022

Speakers



Dr. Ronak B. Patel
Director, Urbanization and Resilience Program at The Harvard Humanitarian Initiative



Joie D Acosta
Senior Behavioral / Social Scientist at The RAND Corporation



Rana Qaimari
Program Manager for EcoPeace Middle East



Isabelle Bremaud
Regional Resilience Advisor for Momentum Integrated Health Resilience at GOAL

Plenary Session

Our first 90 minute webinar of 2022 addressed the main challenges and discussed innovative approaches to localisation for resilient health systems in fragile and conflict-affected contexts.

Panelists from GOAL, The Harvard Humanitarian Initiative (HHI), The RAND Corporation, and EcoPeace Middle East discussed the following questions:

- What are the political and social determinants of health? What are the main challenges?
- What learning is emerging in relation to the improvement of healthcare during adversity and building capacity to respond to health emergencies?
- What approaches or innovations in systems thinking can be applied to build resilient health systems?

Moderator Dr. Ronak B. Patel

Key Takeaways

- GOAL's R4S Approach allows to design and guide interventions that aim to work towards more resilient and inclusive societies, it applies and combines system thinking, network theory, scenario thinking, social behavior change and resilience tools to create a practical and structures step by step participatory approach and procreation process.
- The mapping tool from R4S approach, aims to improve the understanding and analysis of the complex socio-economic systems, and how they would react to different shocks and stresses.
- Shocks and stresses impact social systems and can reverse the development gains and disproportionately affect and do it most vulnerable.
- Health resilience is the ability of people, household, and community health systems to prepare for mitigate, adapt to, and recover from acute recurring and ongoing shocks and stresses in a manner that reduces disruption to access and use of quality healthcare and facilitates equitable health and wellness outcomes.

- To assess the overall resilience of the system, the six determinant factors of resilience are connectivity, redundancy, diversity, participation, governance, and learning.
- A systemic change map, is the result of an ideal map, provided by a multi-stakeholder validation workshop.
- A top-down advocacy approach is a financial and political resource for creating synergies for cooperation, as well as contributing to the planning and development of institutional structures and regional governance required to mitigate and adapt to climate change and the risks of water, energy, and food security.
- A bottom-up approach, works with communities at all levels to raise their awareness of the importance of collaboration in protecting environmental resources.
- A way to build community capacity to address stress is to build more resilient community leadership workers and different types of training programmes that help build community capacity and relevant skills in areas like community engagement or community asset identification.
- It is critical not only to build stronger systems, resilient leaders, and connected individuals, but also to measure what matters, ensuring a diversity of measurement approaches across system, organisational, and individual levels.

Map of the current FP/RH/MNCH service delivery system in South Sudan

Supporting functions: inform, support, and shape the quality of the transaction chain and its ability to develop, learn, and grow.

CORE / Transaction Chain: Input-Output process (or Demand – Supply) of the selected socio-economic system.

Regulatory functions: formal and informal controls that strongly define incentives and behaviours of market players.

Isabelle Bremaud, presenting “The use of the Resilience for Social System (R4S) in South Sudan”.

Strengthening community health resilience critical in a changing world

DISASTERS ARE MORE COMMON

DISASTER COSTS ARE INCREASING

NEW DISASTERS ARE EMERGING

EQUITY IS A CHALLENGE

Joie Acosta from RAND Corporation

ECOPEACE MIDDLE EAST

Who we are

- Environmental Peacebuilding organization
- **Primary objective** is to promote cooperative efforts to protect our shared environment, **improve our people health**, and to promote lasting peace in our region
- Change the Water model: Water and Sanitation Crisis
- Working for 27 years in Jordan/Palestine/Israel

Rana Qaimari Programme manager at EcoPeace Middle East

Click on the link to see Webinar 1

<https://www.youtube.com/watch?v=ZXkOWqLu7QY&t=4799s>

AGENDA & KEY LEARNING

“

It was a really interesting webinar, with a very good balance of theory, practical experiences and recommendations... Really interested in warning and response systems, as well prevention/preparedness actions for emerging infectious diseases and others hazards, that strive to integrate one health (human, animal and environmental health), and/or multiple hazards and vulnerabilities jointly.

”

Claudia Fernández de Córdoba Patel

*Head of Health Warnings Research and Innovation
at University College London Warning Research
Centre*



Webinar 2

Inclusive Early Warning and Response Systems

December 7, 2022

Speakers



Claudia Fernández de Córdoba Patel

Head of Health Warnings Research and Innovation at University College London Warning Research Centre



Gabriella Padilla

Programme Director at GOAL Honduras



Laura Peters

Research Fellow at University College London



Tracy Hart

Senior Environmental Specialist with the World Bank's Environment and Natural Resources Global Practice



Geordan Shannon

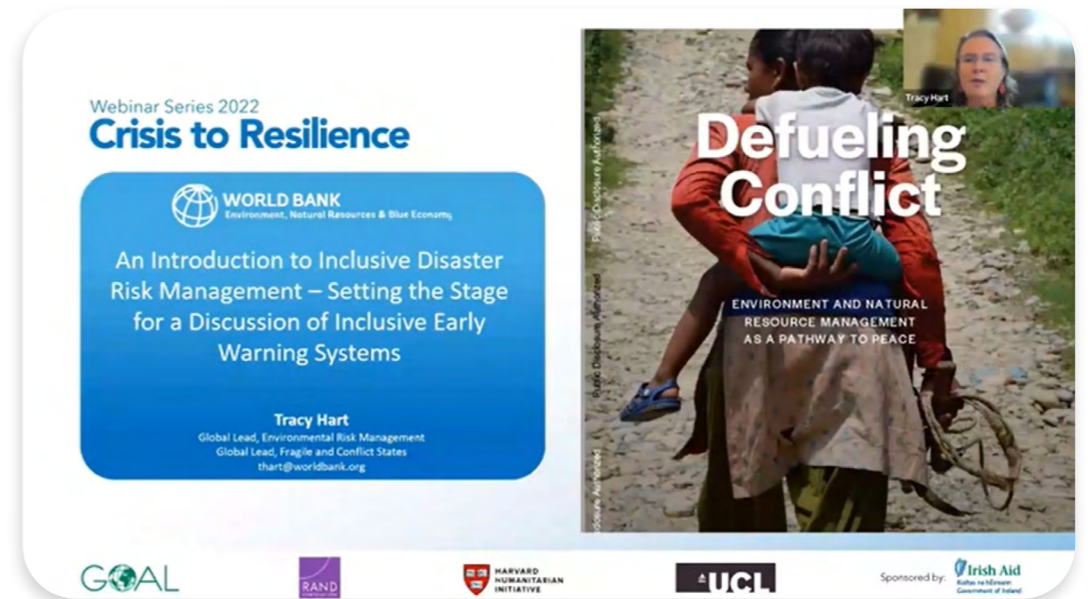
STEMA Co-founder and Chief Medical Officer

Plenary Session

Our second 90 minute webinar in 2022 explored lessons learned, emerging challenges, and new approaches for inclusive Early Warning and Response Systems (EWRS) to build resilience in fragile and conflict-affected contexts.

Panelists from GOAL, University College London and The World Bank explored the following questions:

- Why inclusive EWRS?
- What is and isn't working when applying EWRS?
- What new ideas, approaches and innovations can be applied for inclusive EWRS?



Tracy Hart, Senior Environmental Specialist with the World Bank's Environment and Natural Resources Global Practice

Key Takeaways

- The Sendai Framework for Disaster Risk Reduction 2015–2030 calls for “a more people-centered preventive approach to disaster risk” that is inclusive and engages with all relevant stakeholders.
- Recommendations for disaster preparedness risk management entails reforming and improving social registries in order to track economically disadvantaged groups and government transfers. Also, inclusive data collection and analysis processes, such as participation of marginalised groups.
- To strengthen disaster preparedness systems, it's recommended to: understand how government officials may not be aware of how to serve socially excluded groups, understand marginalised groups responses to disasters, maintaining a social registry of people with special needs, careful shelter design and planning and prioritising restoration of essential public services for vulnerable groups and ensuring access to counseling.

- Physical constraints, financial constraints, information constraints, institutional constraints, and behavioural constraints are examples of constraints associated with potentially excluded people in communities.
- Early warning systems are important for channeling information upwards for decision making, but they are also important for making decisions at the appropriate scale and location.
- Community decision making in complexity, is based on 3 different stages which are: making sense of complexity, measurement+ priorities and decision making +action.
- Community specific maps are used to identify pressure points which are essentially based on the pattern of data and the confluence of certain feedback loops the system, and also entry points that are the things that are politically feasible to act with the current situation that's occurring on the ground.
- The crisis to resilience framework reflects on how the global maker trends are leading the way to humanitarian crisis.
- RINA is designed to address the global trends of rapid and unplanned urban expansion and allow local government implement strategies to manage this expansion and improve the resilience inclusion of its citizens
- Conflict- affected populations are disproportionately exposed to hazards and experience inequitable disaster impacts due to their vulnerability.
- Core local systems are the ones that the people contribute to and depend on to meet their basic needs.
- Local systems are dynamic, and they change as cities evolve and grow.

Gabriella Padilla representing GOAL team, presenting our Resilient and Inclusive Neighborhood Approach (RINA).

Dr. Geordan Shannon Co-founder and Chief Medical Officer of STEMMA

Click on the link to see Webinar 2

<https://www.youtube.com/watch?v=7927Ugtq8Go&t=2323s>



Comments from the audience

"Very interesting presentation please could you help us to send the hand out materials."

-Mohamud Sheikh Abdi

"I'm really intrigued by this process. Looks amazing. Thank you for your presentation Geordan. We could use this here in Florida, especially in our rural and migrant farmworker areas."

-Bryan Russell

"Really enjoyed the connections highlighted in the presentation."

-Kathryn Campos

"Very useful to focus on the 'intersect' of prevention and early warning systems as the intersection of these two approaches are not considered while designing at field level Cheers!"

-Ida Molina

"Appreciate to share your presentations with us. Thank you so much."

-Samuel Cobrado

"Wonderful presentations and fantastic questions by moderator."

-Anonymus Attendee



HARVARD
HUMANITARIAN
INITIATIVE



Irish Aid
Rialtas na hÉireann
Government of Ireland



PROGRAMME
INNOVATION LAB

Innovating to Overcome Humanitarian Crisis

The GOAL Programme Innovation Lab is a dynamic and collaborative unit established by GOAL to foster innovation within GOAL's programmes and to promote this work both internally and externally with the wider development and humanitarian community.

For more updates and stories from our work supporting communities around the world, visit our [Stories Archive](#) and follow us on social media:

@GOALGlobal @GOAL_Global @GOALGlobal

GOALGlobalcharity GOAL Global

GOAL Ireland

Carnegie House, Library Road, Dun Laoghaire Co. Dublin