

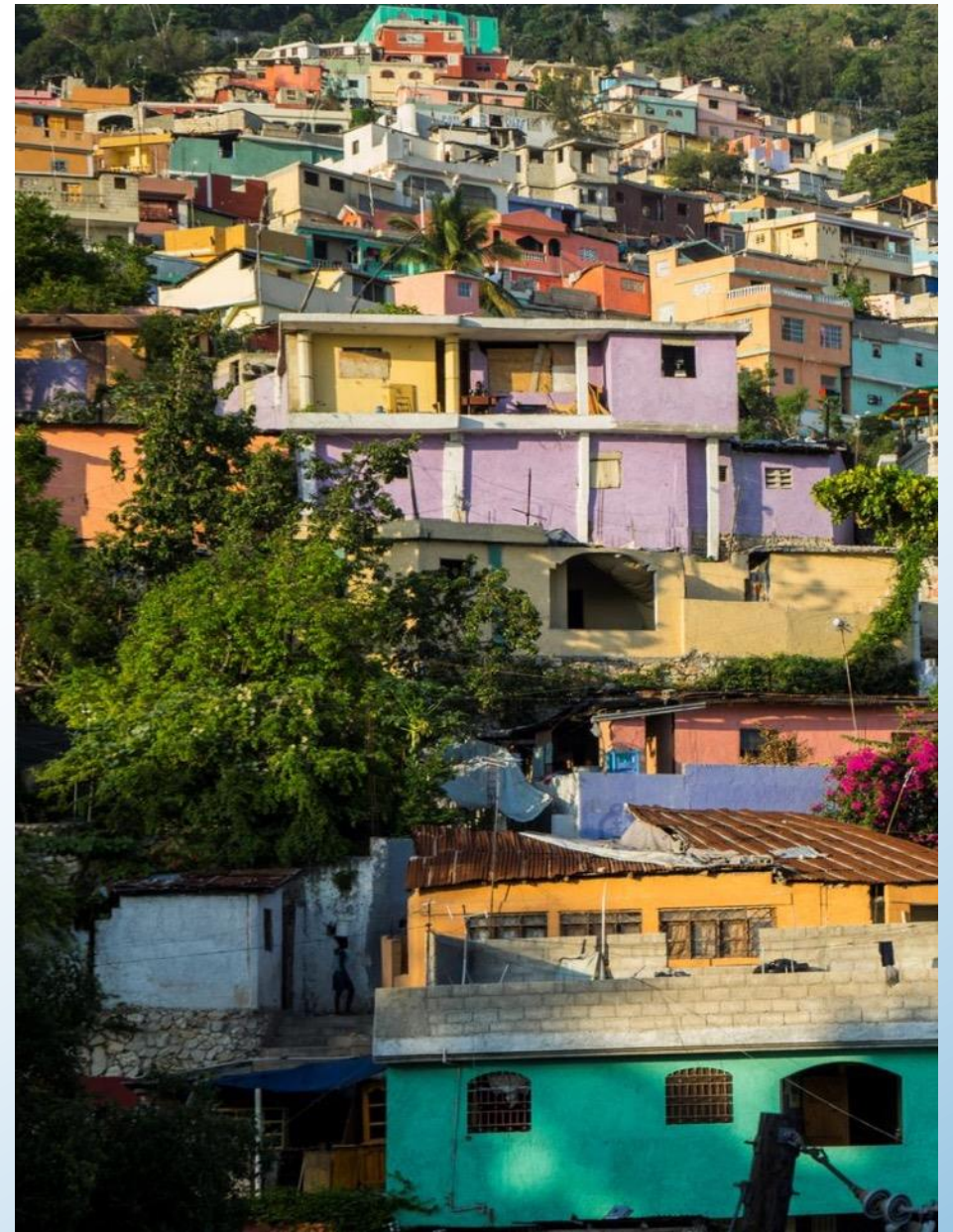
Webinar Series 2022

# Crisis to Resilience



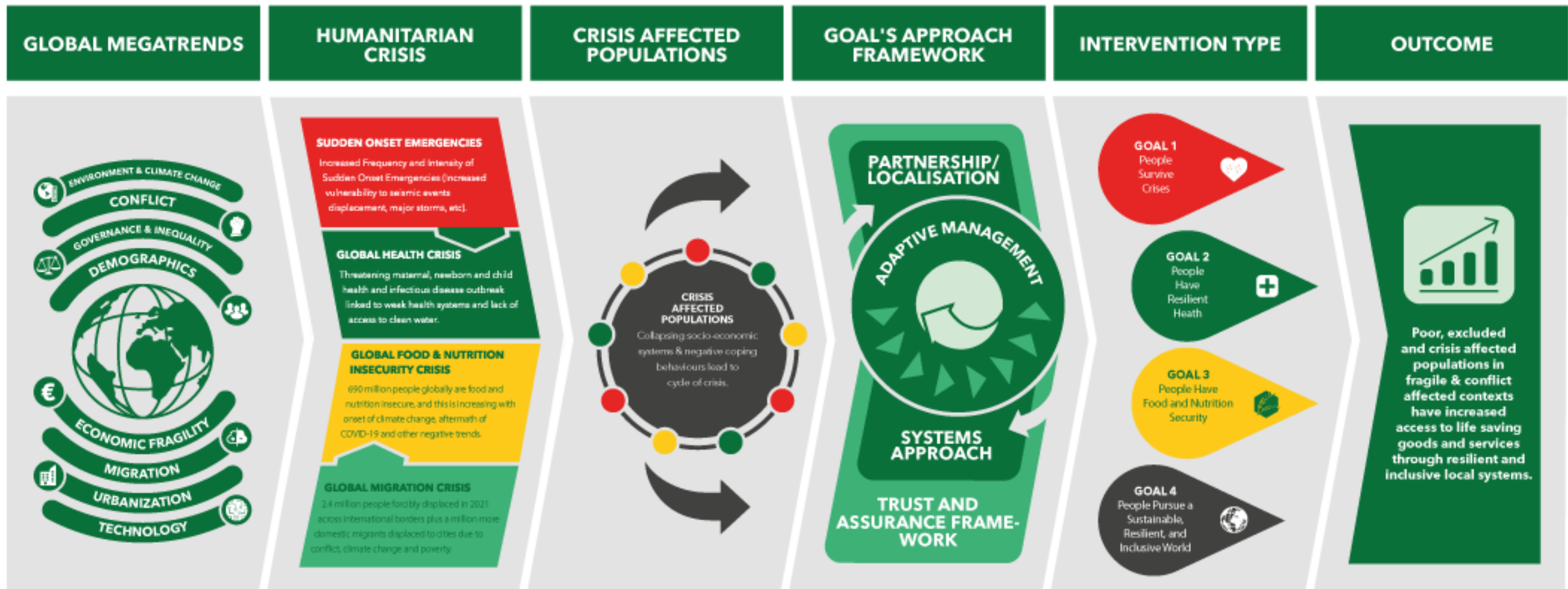
## Resilient and Inclusive Neighborhood Approach (RINA)

**Gabriela Padilla**  
Program Director at GOAL Honduras



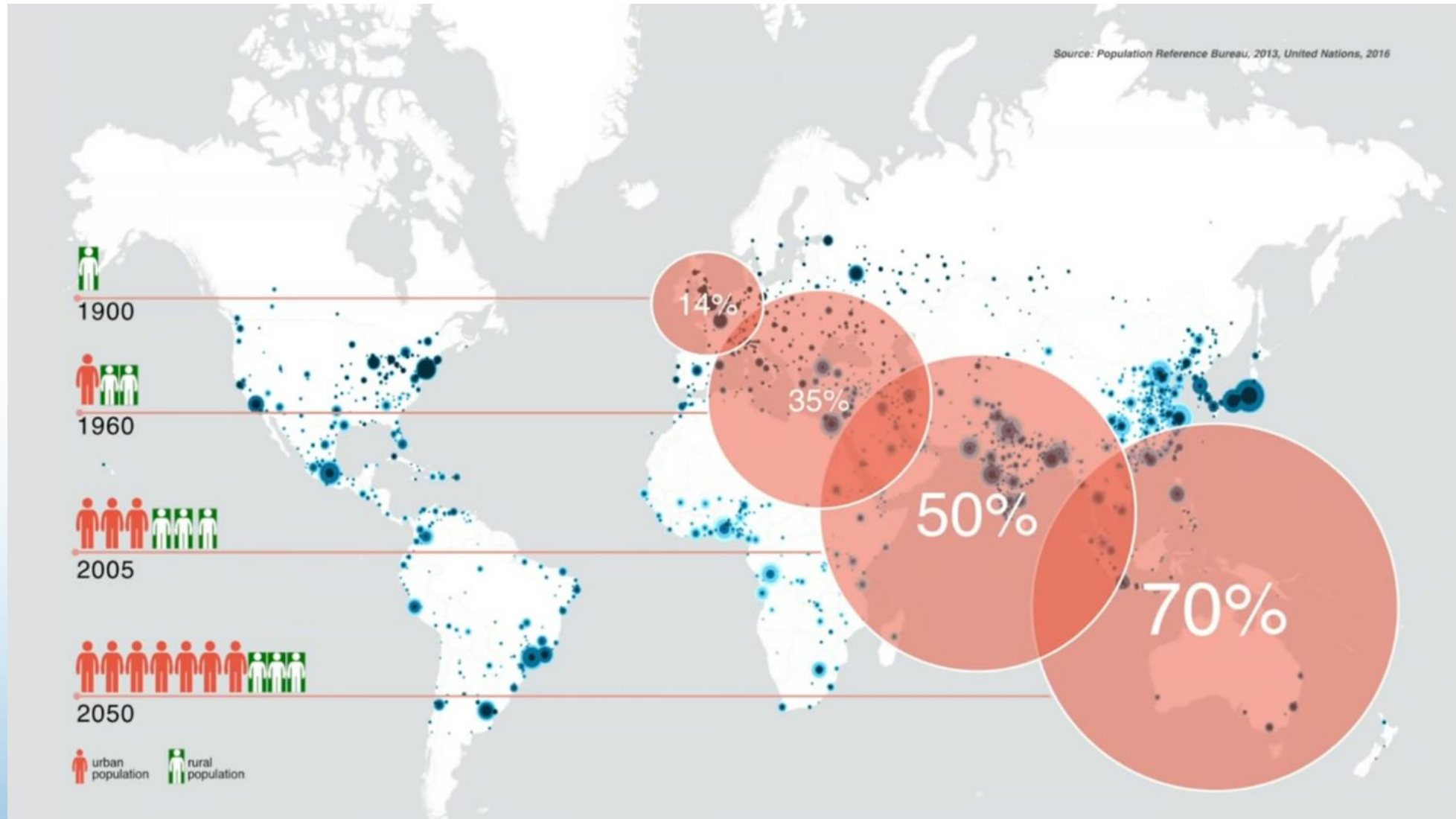


# CRISIS TO RESILIENCE FRAMEWORK



# FROM CRISIS TO RESILIENCE

# Global Trends



# Why RINA? For whom?

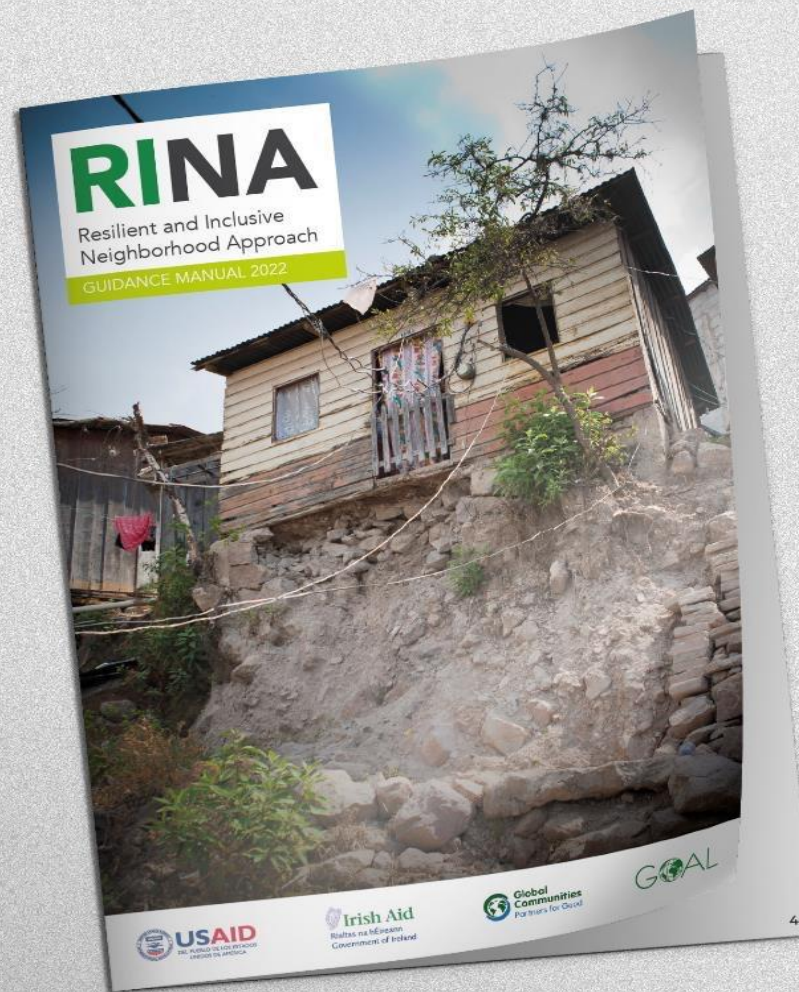
1 billion people living in informal urban settlements



# What is RINA?

Multisectoral community-centered approach for more resilient and inclusive neighborhoods.

RINA is centered on localization to build the capacity of local actors based on their role in local systems.



Scan to watch RINA video



Scan to download RINA Brochure



# ¿Who is the RINA Approach and its Guidance Manual for?

- Local government agencies responsible for administration of cities
- Communities and community-based organizations
- National or regional government agencies, academic institutions, private sector businesses, or civil society agencies

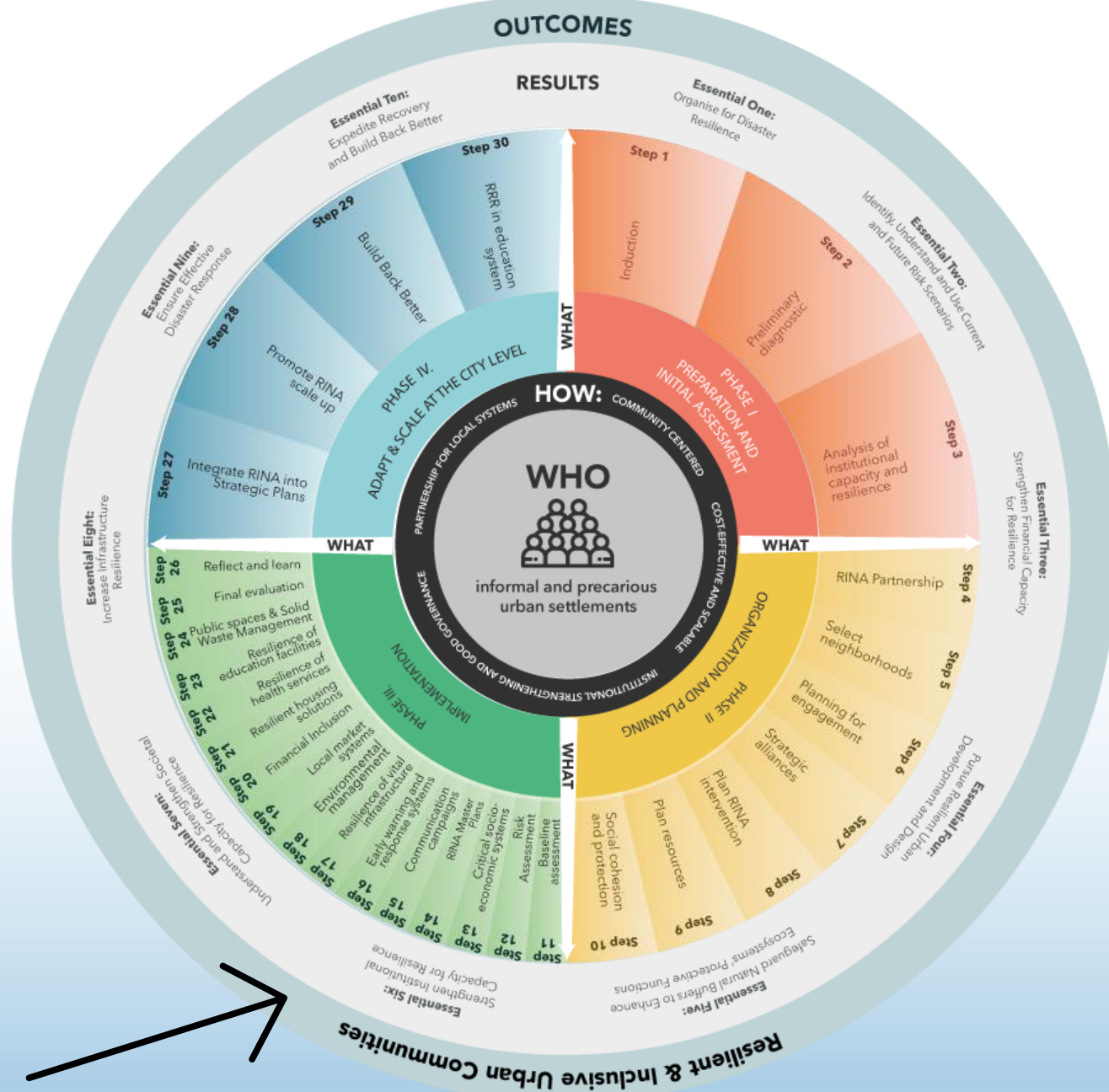


# How to do it?





# How is RINA structured?



Scan to see the detailed diagram

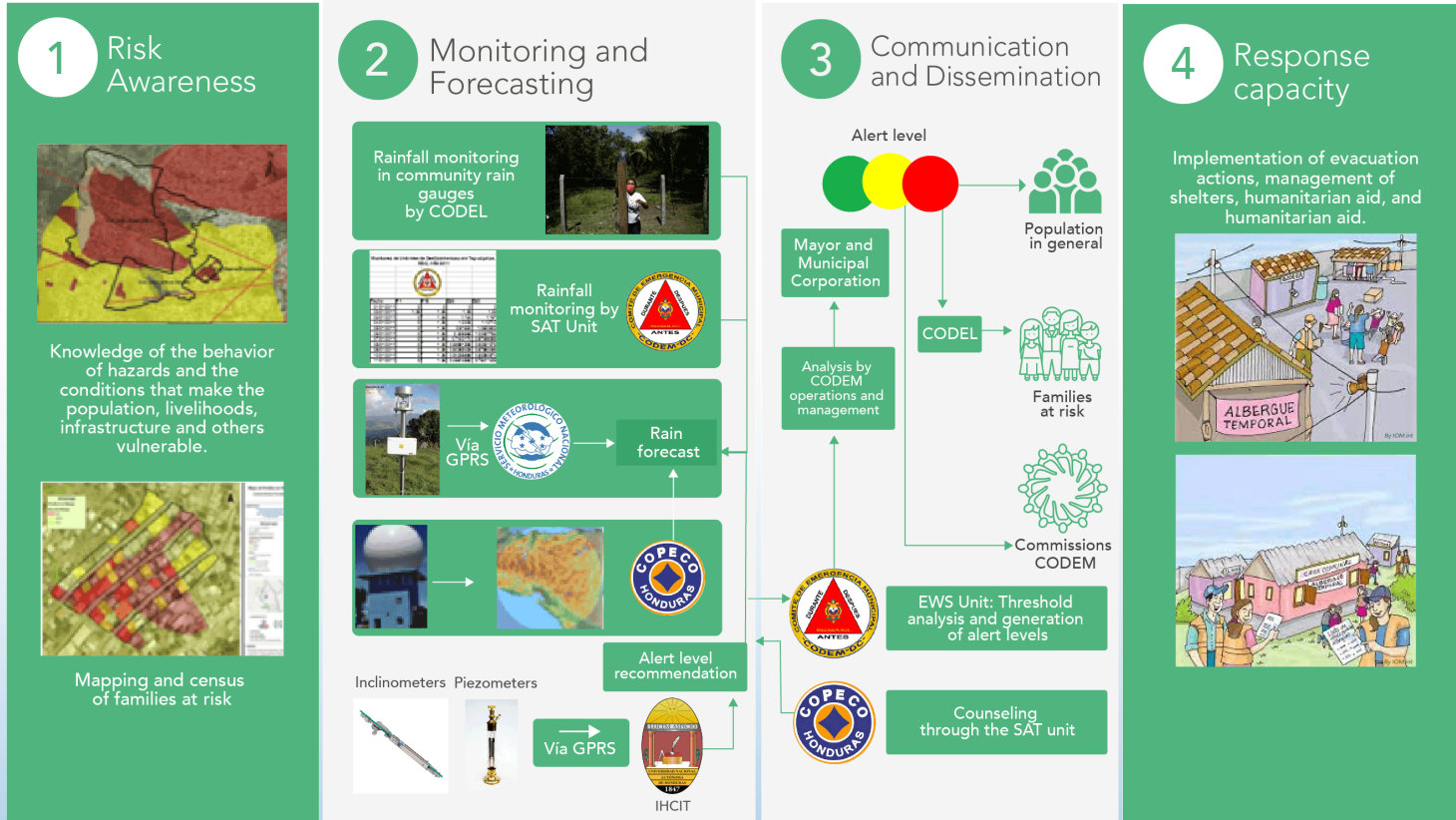


# Step 16

## Design and Operationalize Early Warning and Response Systems



Landslide Early Warning System  
Administered by the Mayor's  
Office of the Central District



\*The alert dissemination mechanisms are: VHF, UHF, public media, telephone, email, messaging, social network.

frontiers | Frontiers in Global Health

OPEN ACCESS

EDITED BY  
C. Ivo Rodriguez-Prado,  
E. I. Universidad Nacional Autónoma de México

REVIEWED BY  
Wenjie Wu,  
University of Ghana, Ghana  
Luisa Peters,  
University of London, United Kingdom

\*CORRESPONDENCE  
Laura E. R. Peters <sup>1,2\*</sup>,  
Bunghadonchaiak

SPECIALTY SECTION  
This article was submitted to  
Global Health,  
a section of the journal  
Frontiers in Global Health

RECEIVED 05 May 2022  
ACCEPTED 05 August 2022  
PUBLISHED 05 August 2022

CITATION  
Peters LE<sup>1,2\*</sup>, Clark-Ginsberg A,  
McCaul B, Cáceres G, Muñoz AL,  
Balagna J, Lopez A, Muñoz S, Patel S,  
Lopez A, Lopez A, Lopez A, Lopez A,  
and Van Den Hoek B (2022) Informality, violence, and disaster risk: Coproducing inclusive early warning and response systems in urban informal settlements in Honduras

1 Institute for Risk and Disaster Reduction and Institute for Global Health, University College London, London, United Kingdom; 2 School of International Service, American University, Washington, DC, United States; 3 Center for Global Health, University of London, United Kingdom; 4 Center for Global Health, University of London, United Kingdom; 5 Center for Global Health, University of London, United Kingdom; 6 Center for Global Health, University of London, United Kingdom; 7 Center for Global Health, University of London, United Kingdom; 8 Center for Global Health, University of London, United Kingdom; 9 Center for Global Health, University of London, United Kingdom; 10 Center for Global Health, University of London, United Kingdom; 11 Center for Global Health, University of London, United Kingdom; 12 Center for Global Health, University of London, United Kingdom; 13 Center for Global Health, University of London, United Kingdom; 14 Center for Global Health, University of London, United Kingdom; 15 Center for Global Health, University of London, United Kingdom; 16 Center for Global Health, University of London, United Kingdom; 17 Center for Global Health, University of London, United Kingdom; 18 Center for Global Health, University of London, United Kingdom; 19 Center for Global Health, University of London, United Kingdom; 20 Center for Global Health, University of London, United Kingdom

### Informality, violence, and disaster risks: Coproducing inclusive early warning and response systems in urban informal settlements in Honduras

Laura E. R. Peters<sup>1,2\*</sup>, Aaron Clark-Ginsberg<sup>3</sup>, Bernard McCaul<sup>4</sup>, Gabriela Cáceres<sup>5</sup>, Ana Luisa Muñoz<sup>6</sup>, Jay Balagna<sup>7</sup>, Alejandra Lopez<sup>8</sup>, Sonny S. Patel<sup>9</sup>, Ronak B. Patel<sup>10</sup> and Jarron Van Den Hoek<sup>11</sup>

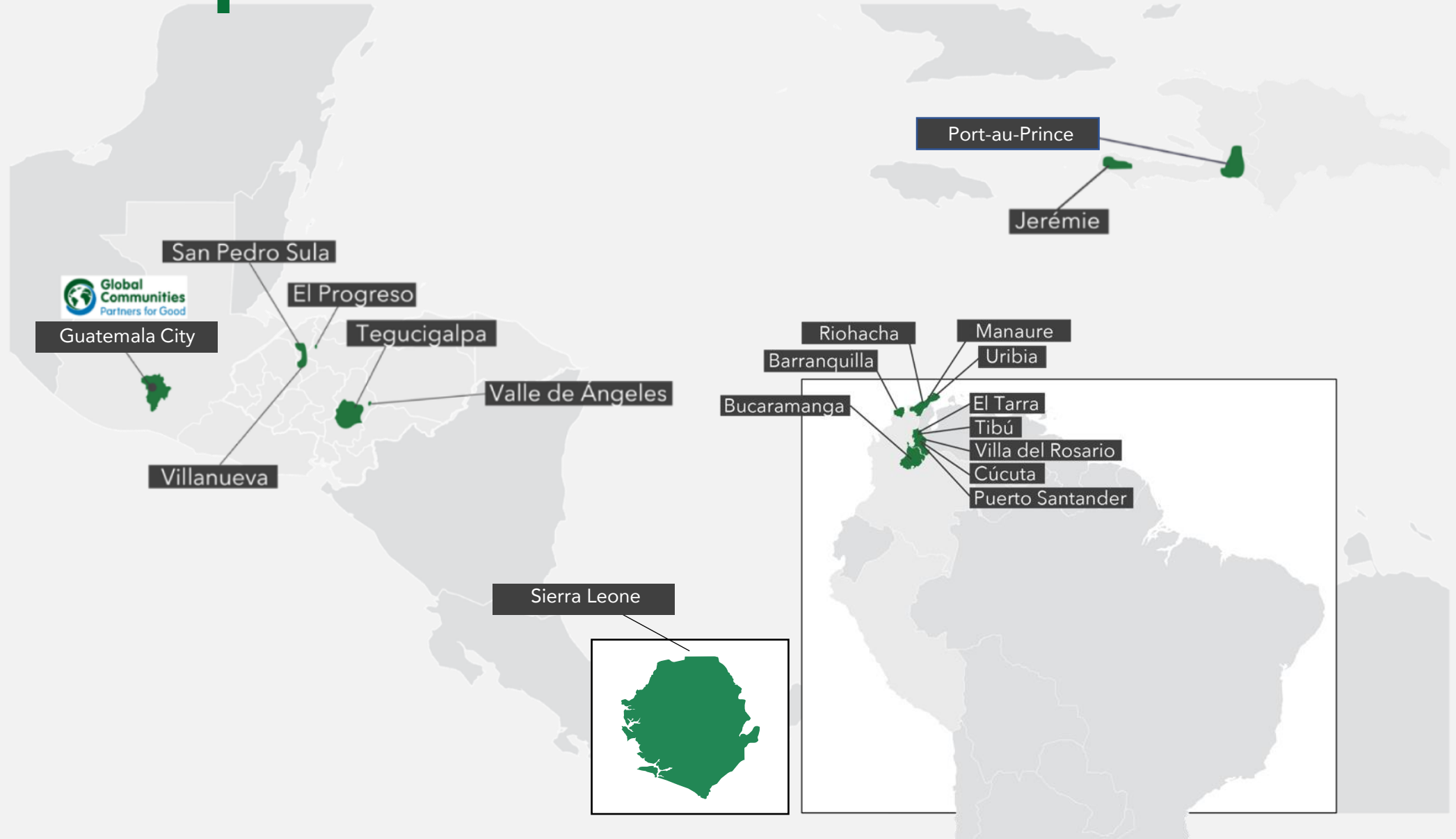


Scan to read case study



Scan to read case study

# RINA Implementation





# ¡Thank you!

[resiliencenexus.org](https://resiliencenexus.org)

[resilience@goal.ie](mailto:resilience@goal.ie)

<https://www.goalglobal.org/>

